

*fotografia descomplicada fragmentada*

POR QUE  
SUAS FOTOS  
SÃO  
CLARINHAS?





FOTOMETRIA

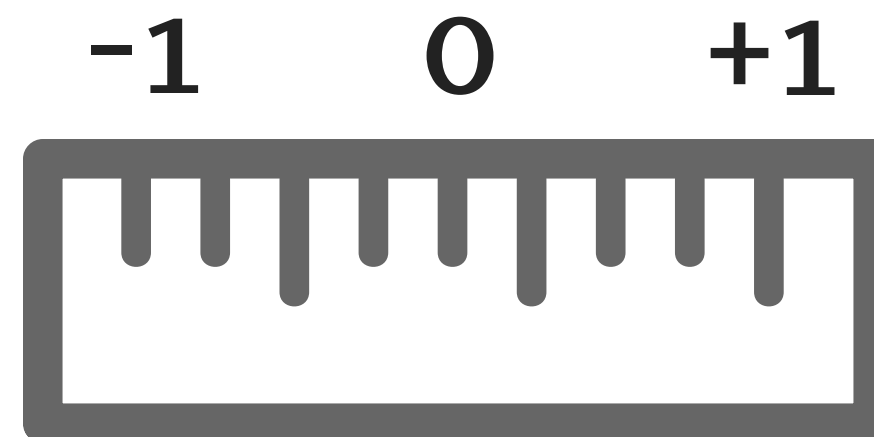
# CONCEITOS BÁSICOS

FOTOGRAFIA = escrita com a luz

FOTOMETRIA = medição da luz

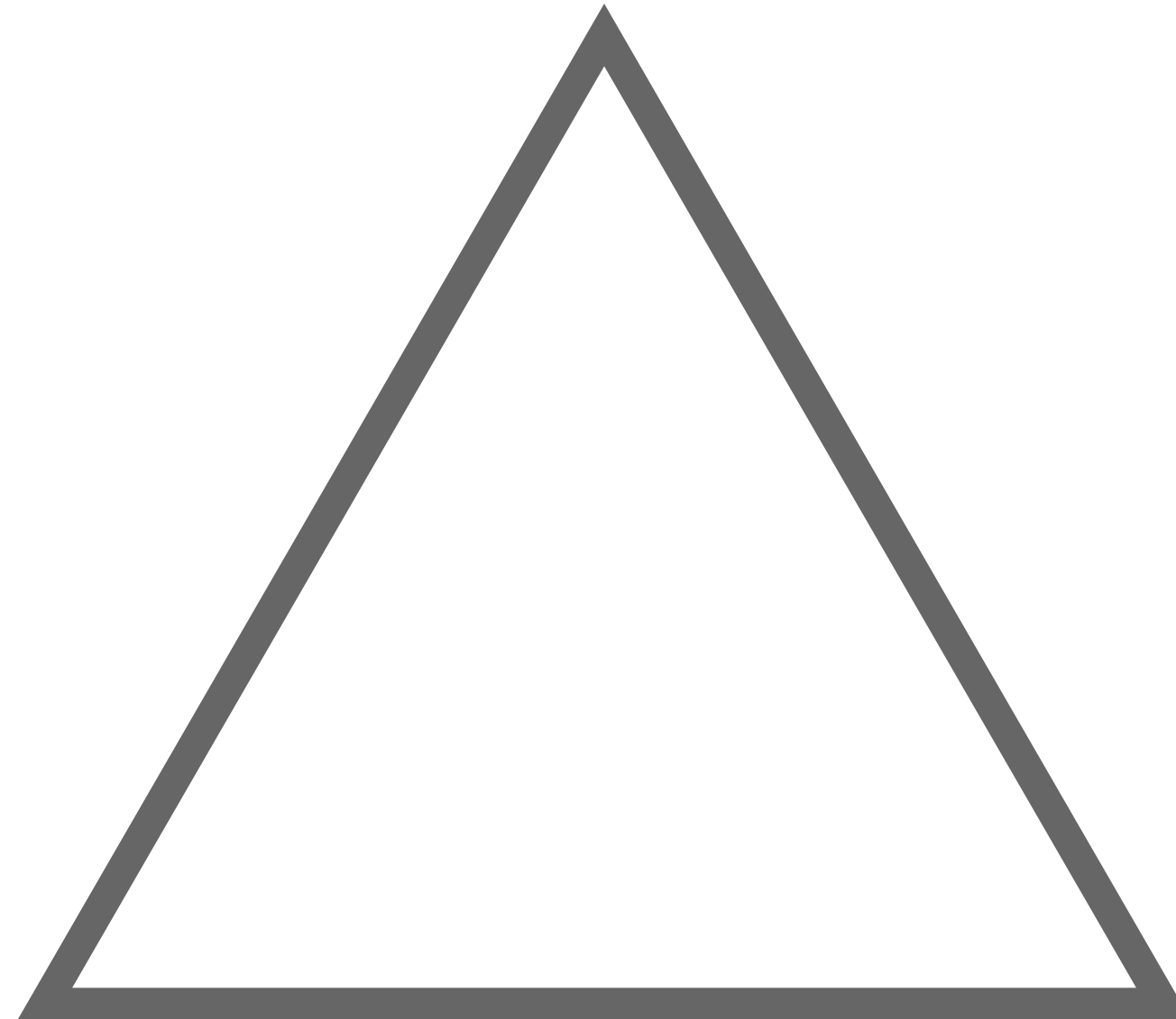
FOTÔMETRO = instrumento usado para medir a luz

  
fotômetro da câmera



# COMO É FEITA A MEDIÇÃO DA LUZ?

ISO



$1/xx$

VELOCIDADE  
DO  
OBTURADOR

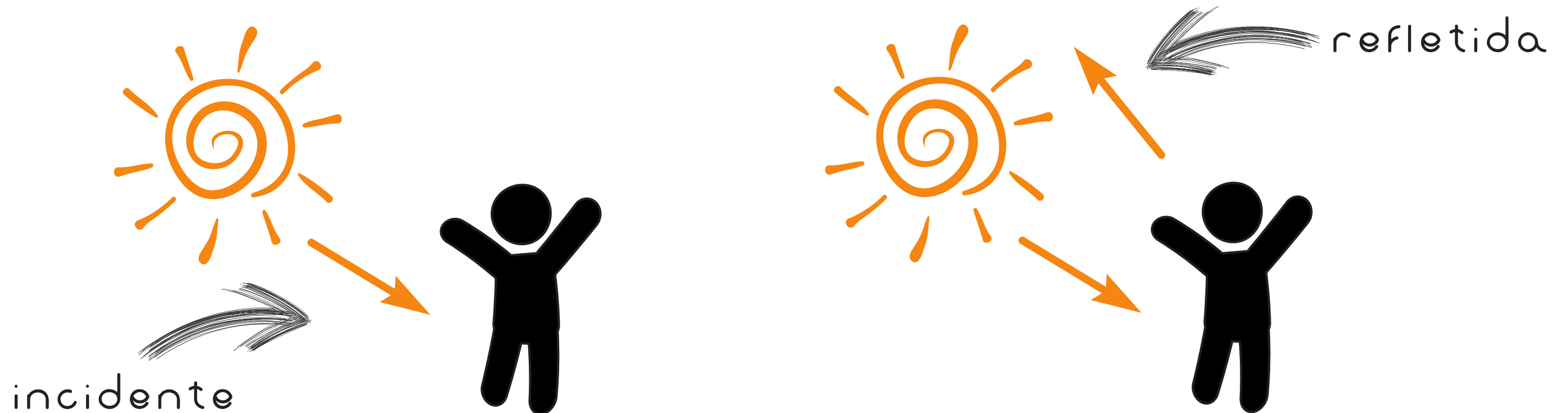
$f/xx$

ABERTURA  
DO  
DIAFRAGMA

# TIPOS DE LUZ

INCIDENTE = luz que cai no objeto

REFLETIDA = luz que sai do objeto

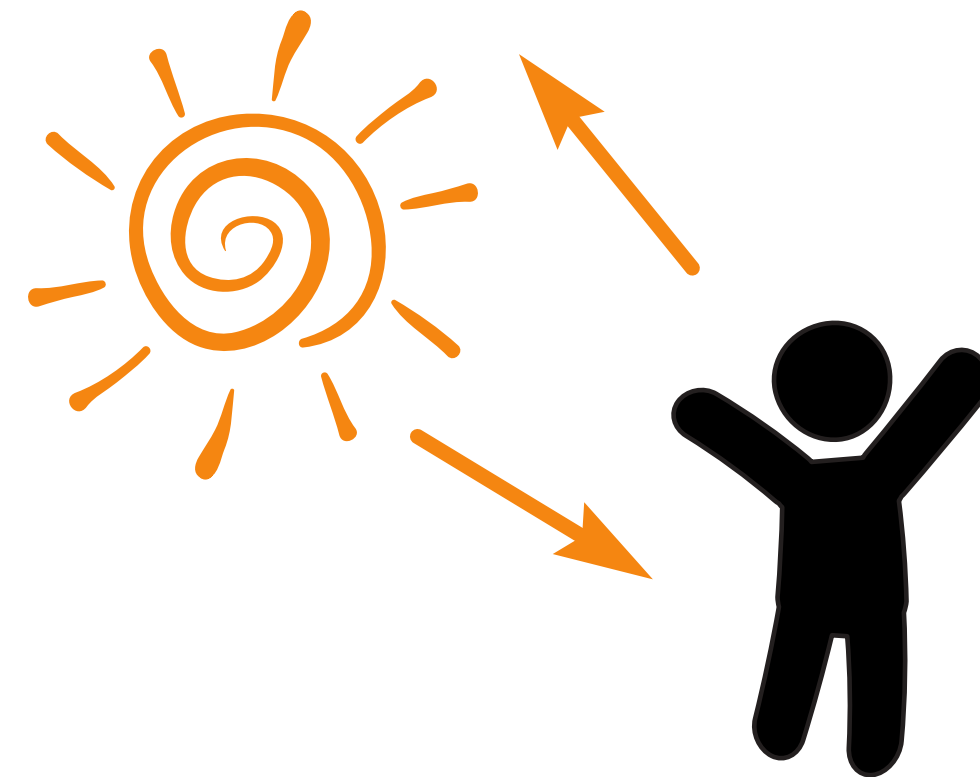
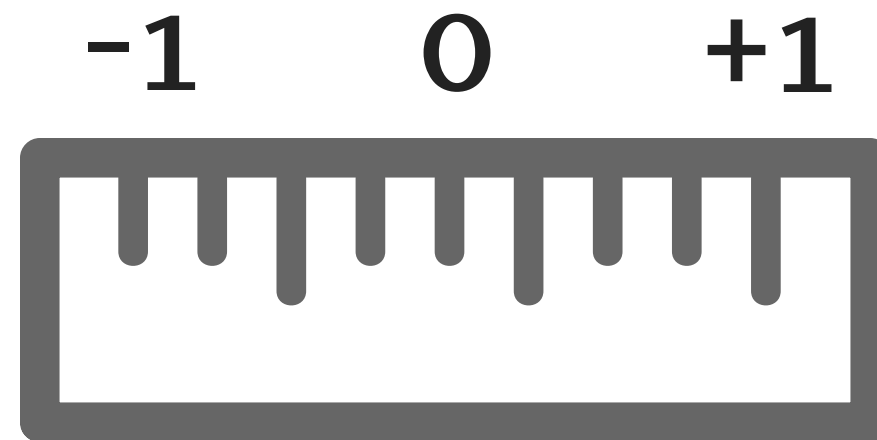


# FOTÔMETRO DA CÂMERA

mede LUZ refletida

não enxerga cores

enxerga TONS (claros e escuros)

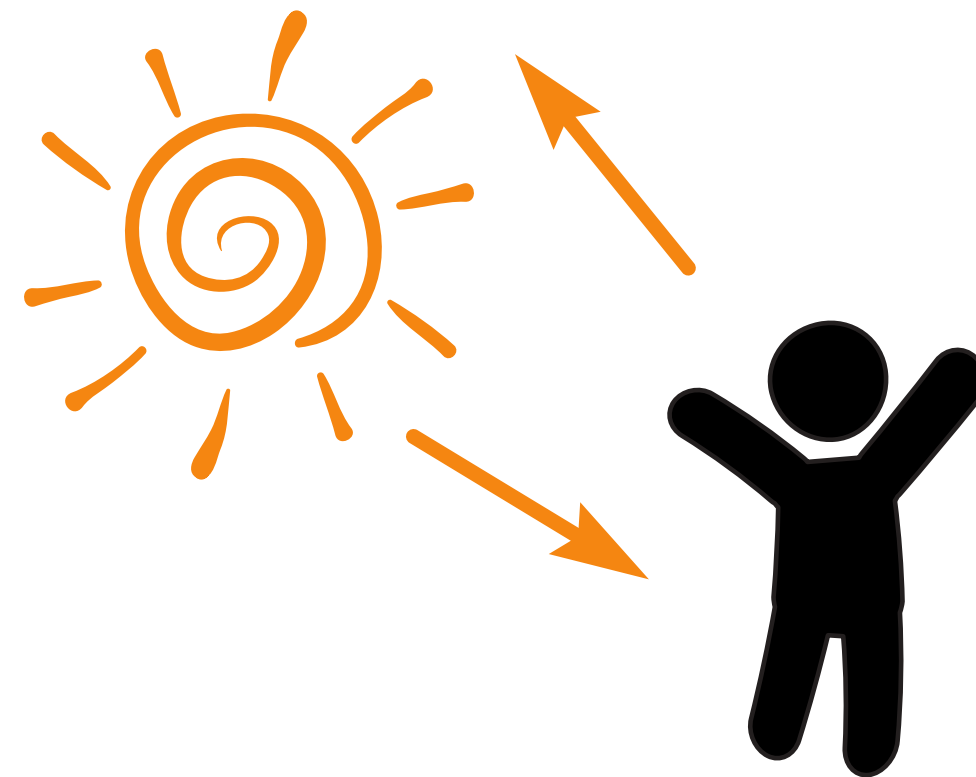
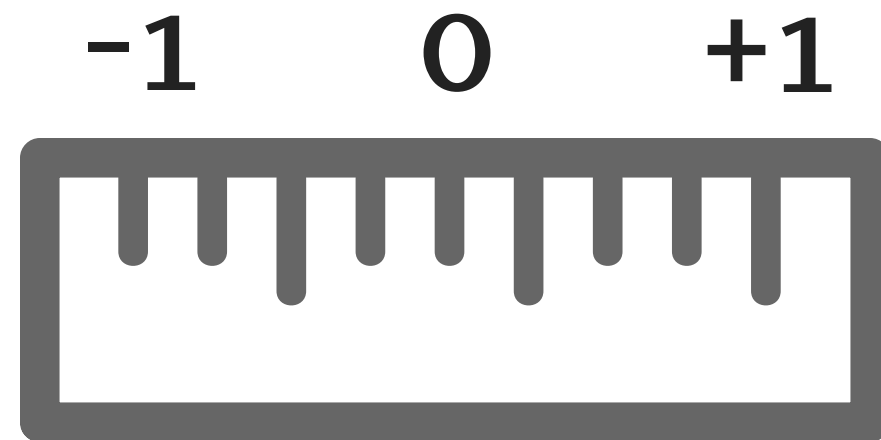




# FOTÔMETRO DA CÂMERA

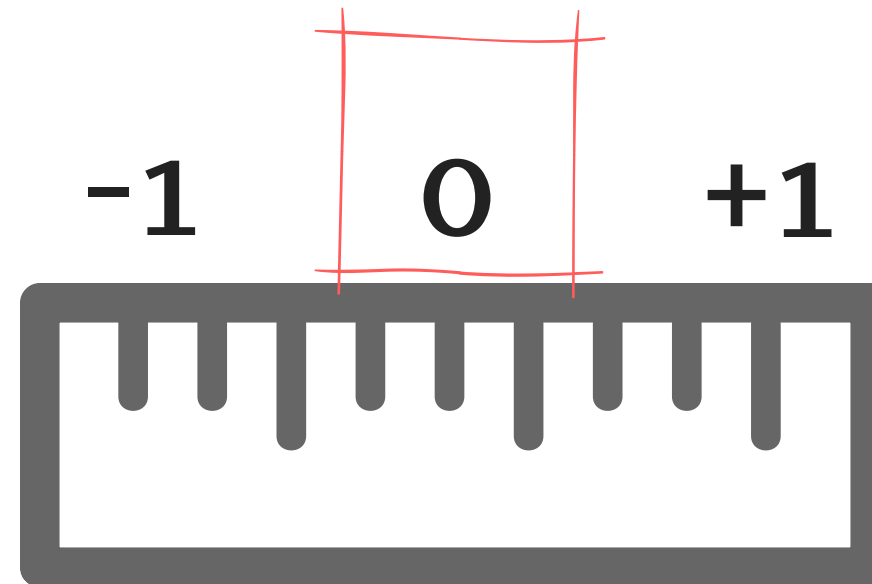
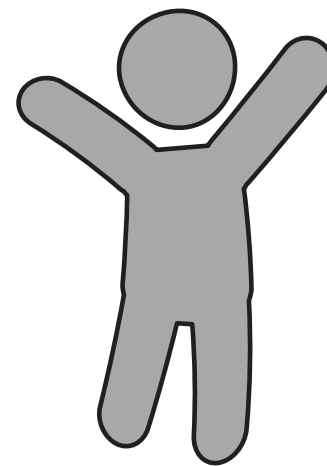
BRANCOS E CLAROS = muita luz (+1)

PRETOS E ESCUROS = pouca luz (-1)



# FOTÔMETRO DA CÂMERA

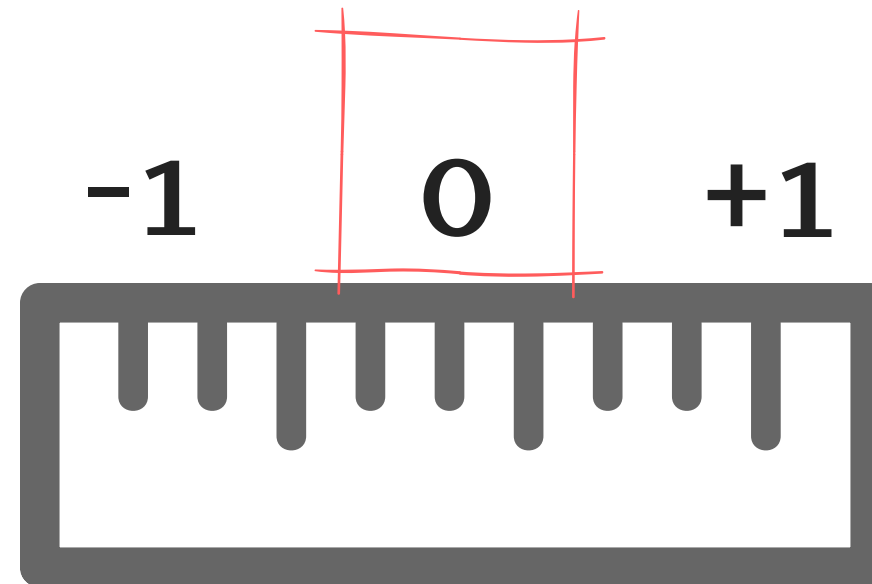
busca tons médios (0) - CINZA





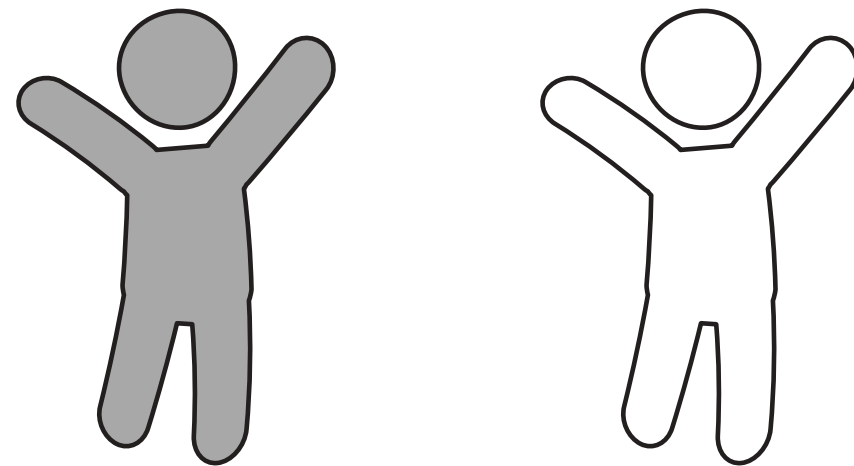
# FOTÔMETRO DA CÂMERA

PRETO E BRANCO ficam CINZA



# EXEMPLO FOTÔMETRO ZERADO objeto BRANCO

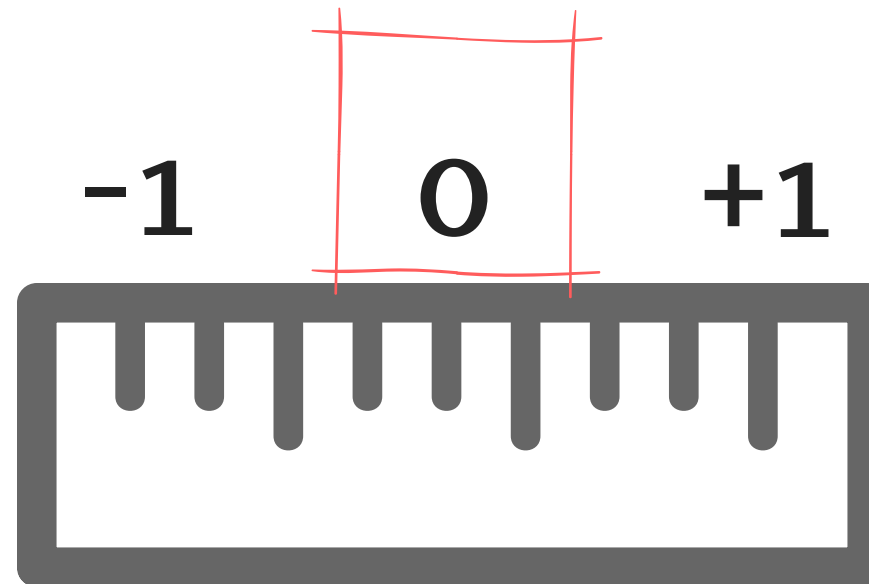
o que fazer  
para o BRANCO  
sair BRANCO e  
não CINZA?



ISO 200

f/5.6

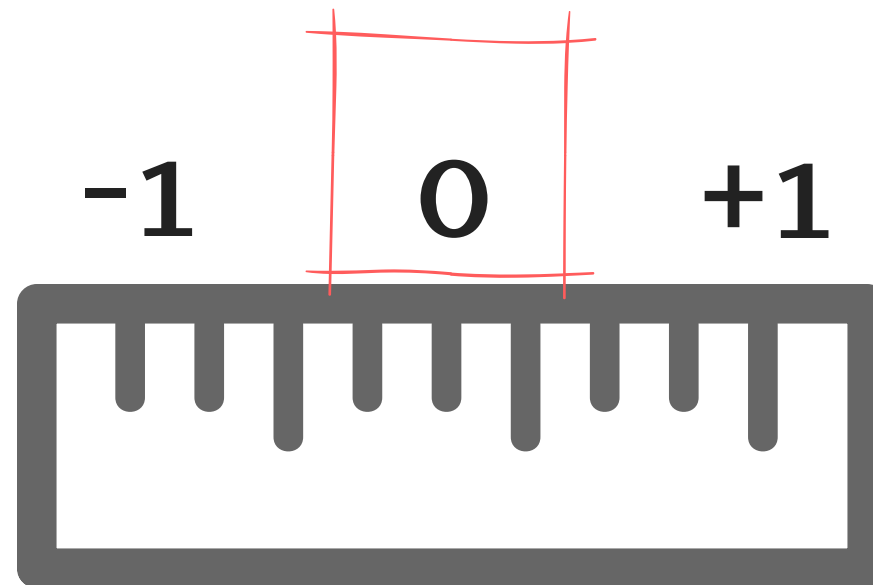
1/250

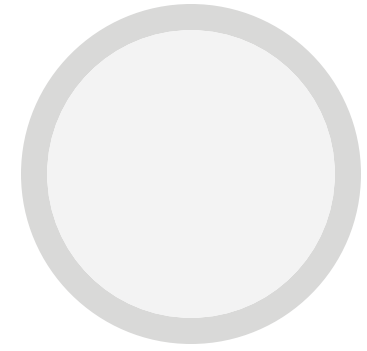


preciso de  
+ LUZ

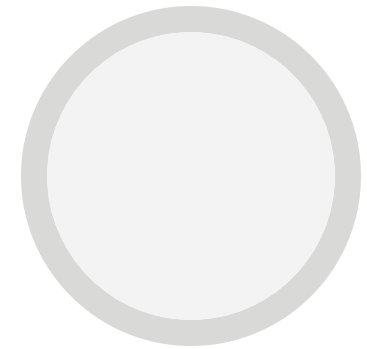
porque

fotômetro zerado = tons médios = cinza

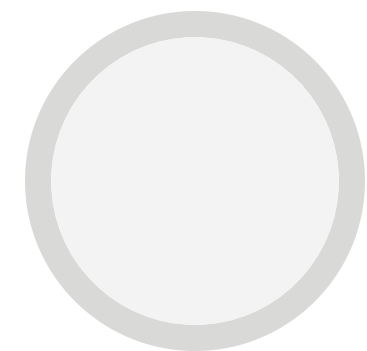




AUMENTAR O ISO



ABRIR O DIAFRAGMA



DIMINUIR A VELOCIDADE







AUMENTAR O ISO OU



ABRIR O DIAFRAGMA OU

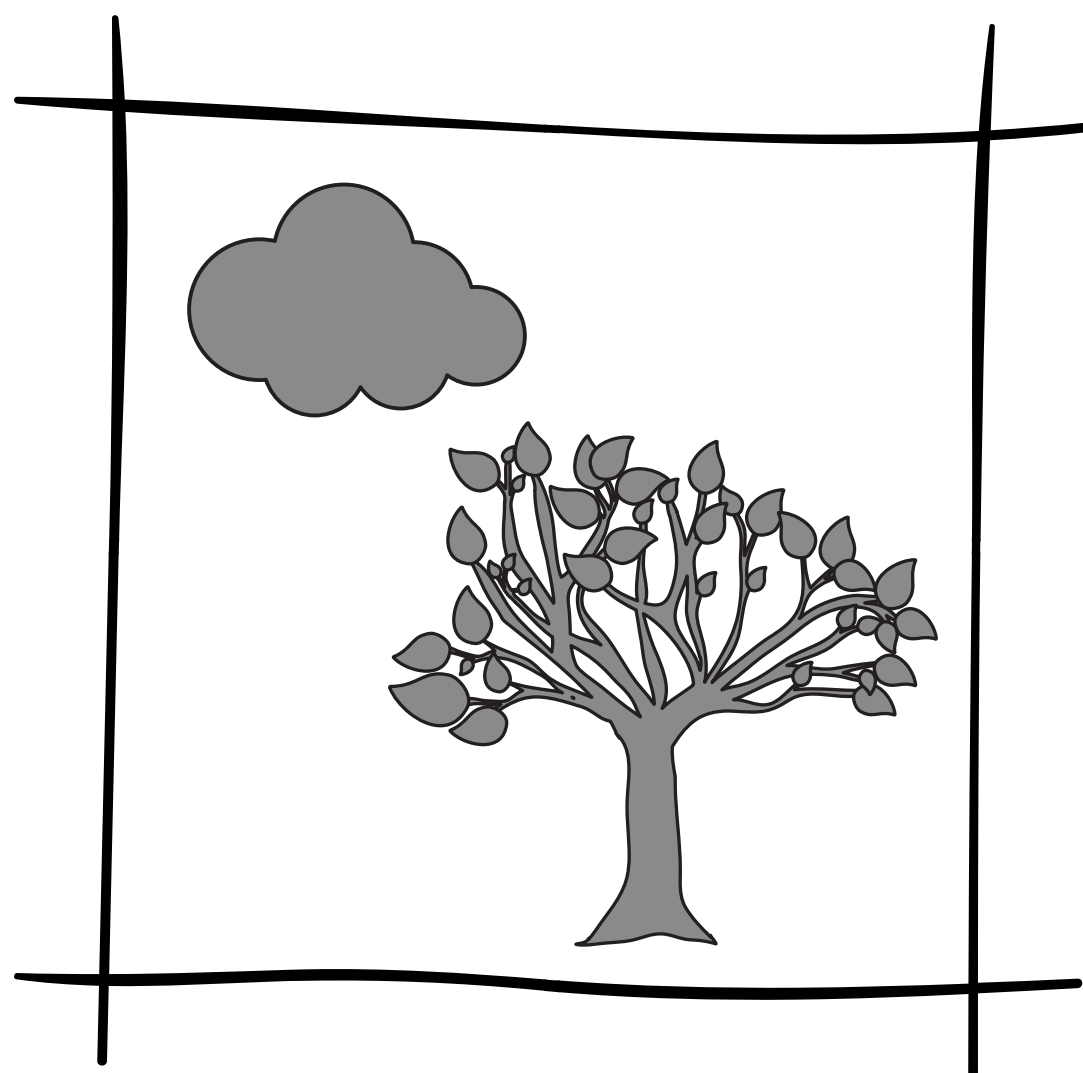


DIMINUIR A VELOCIDADE

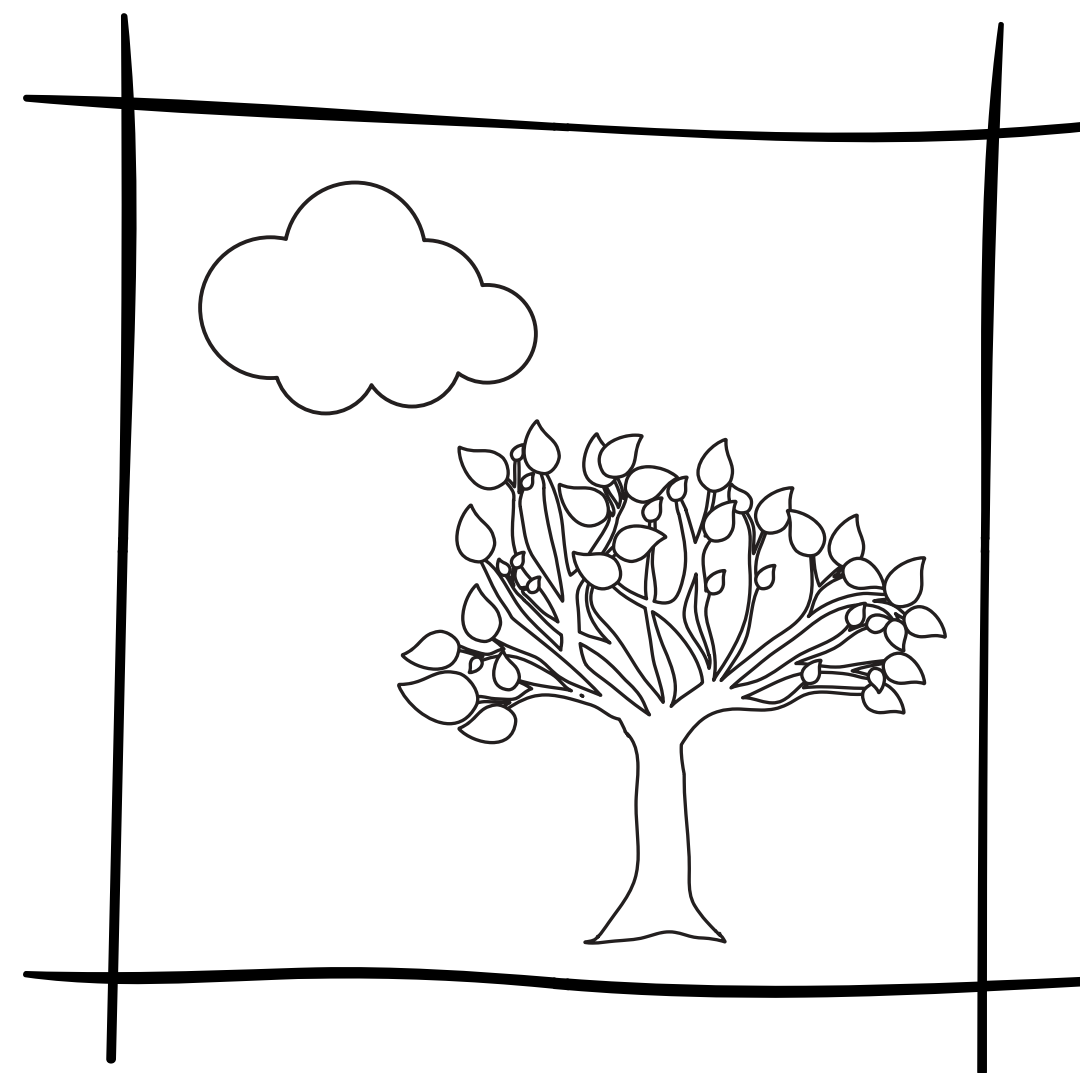




# AUMENTAR O ISO



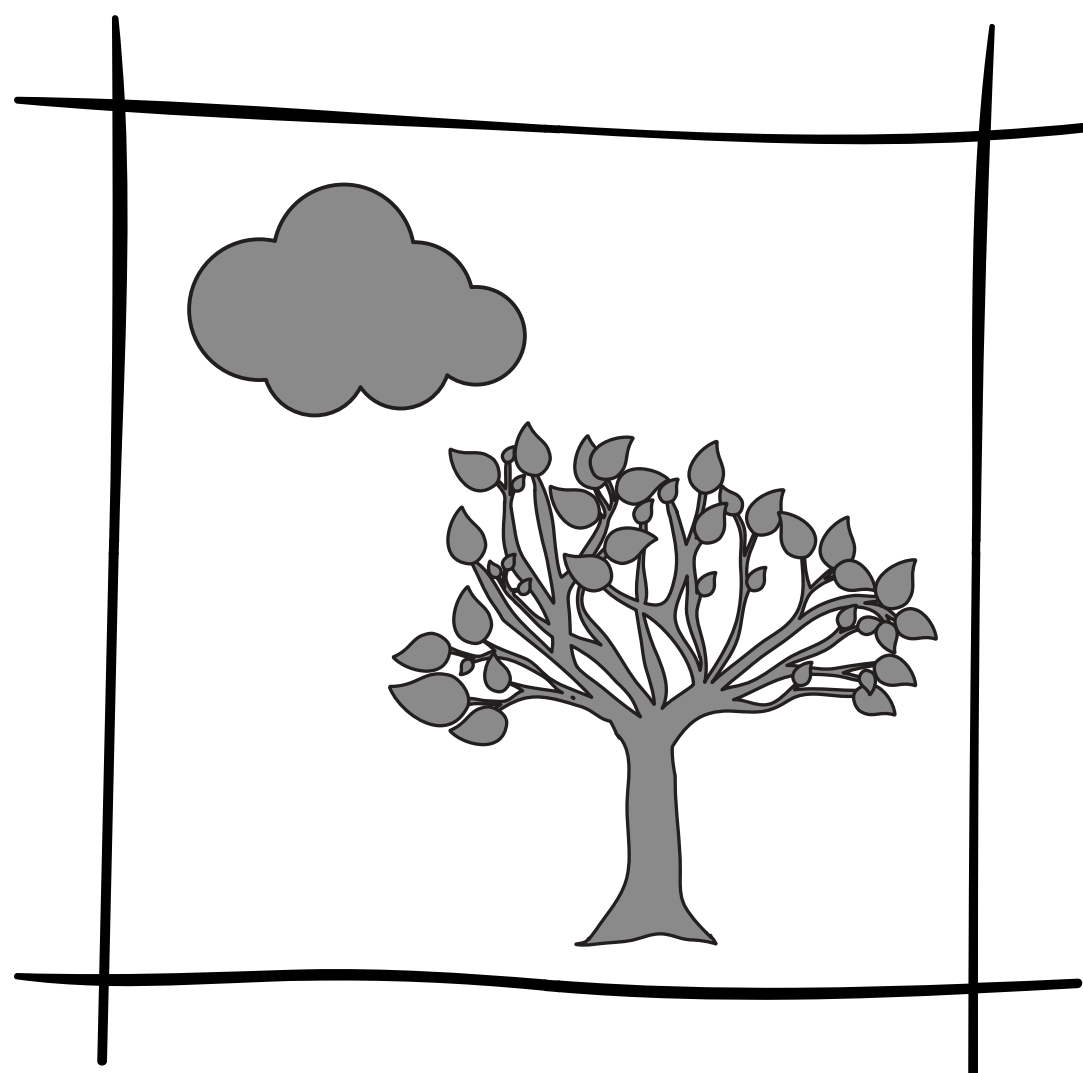
ISO 200



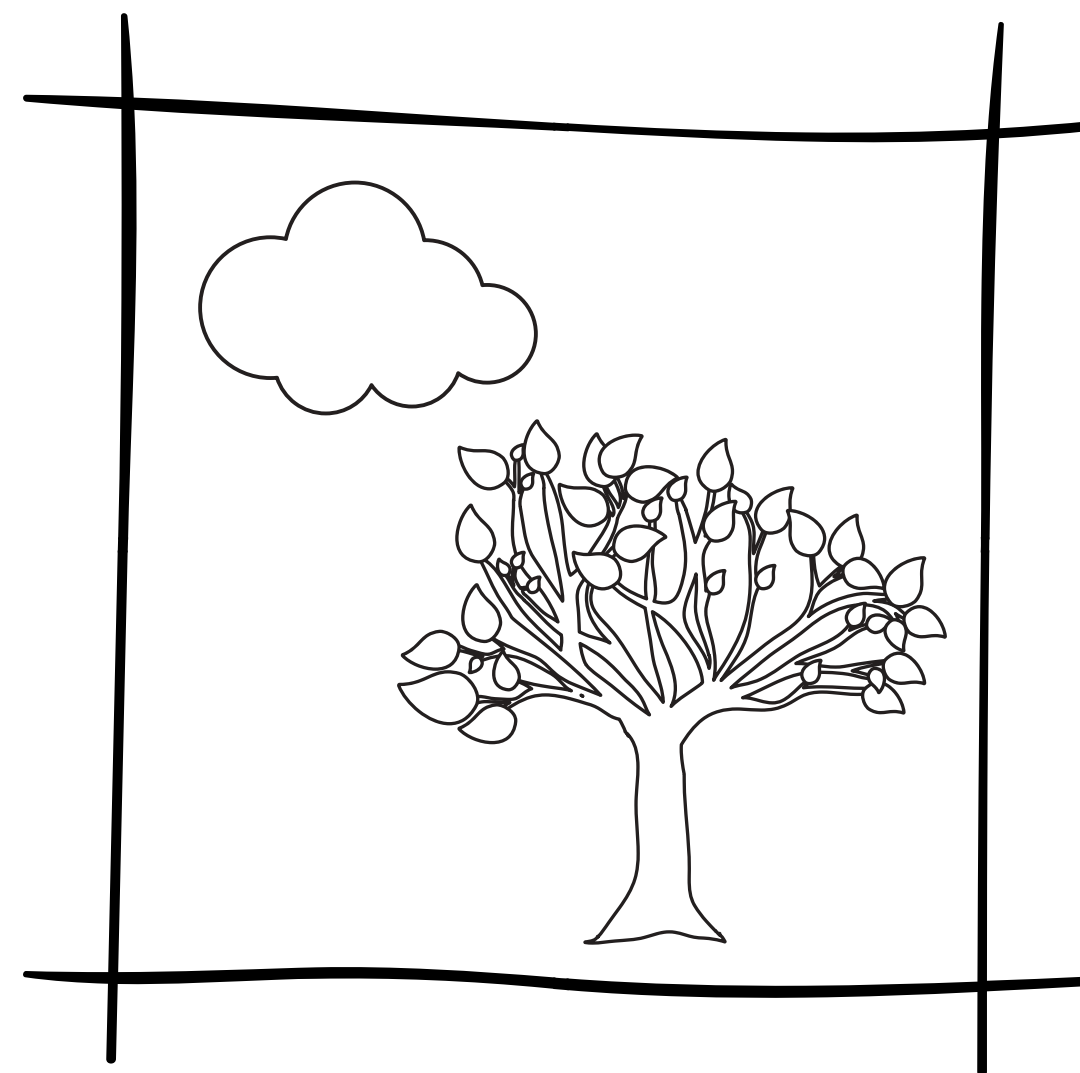
ISO 800



# ABRIR O DIAFRAGMA



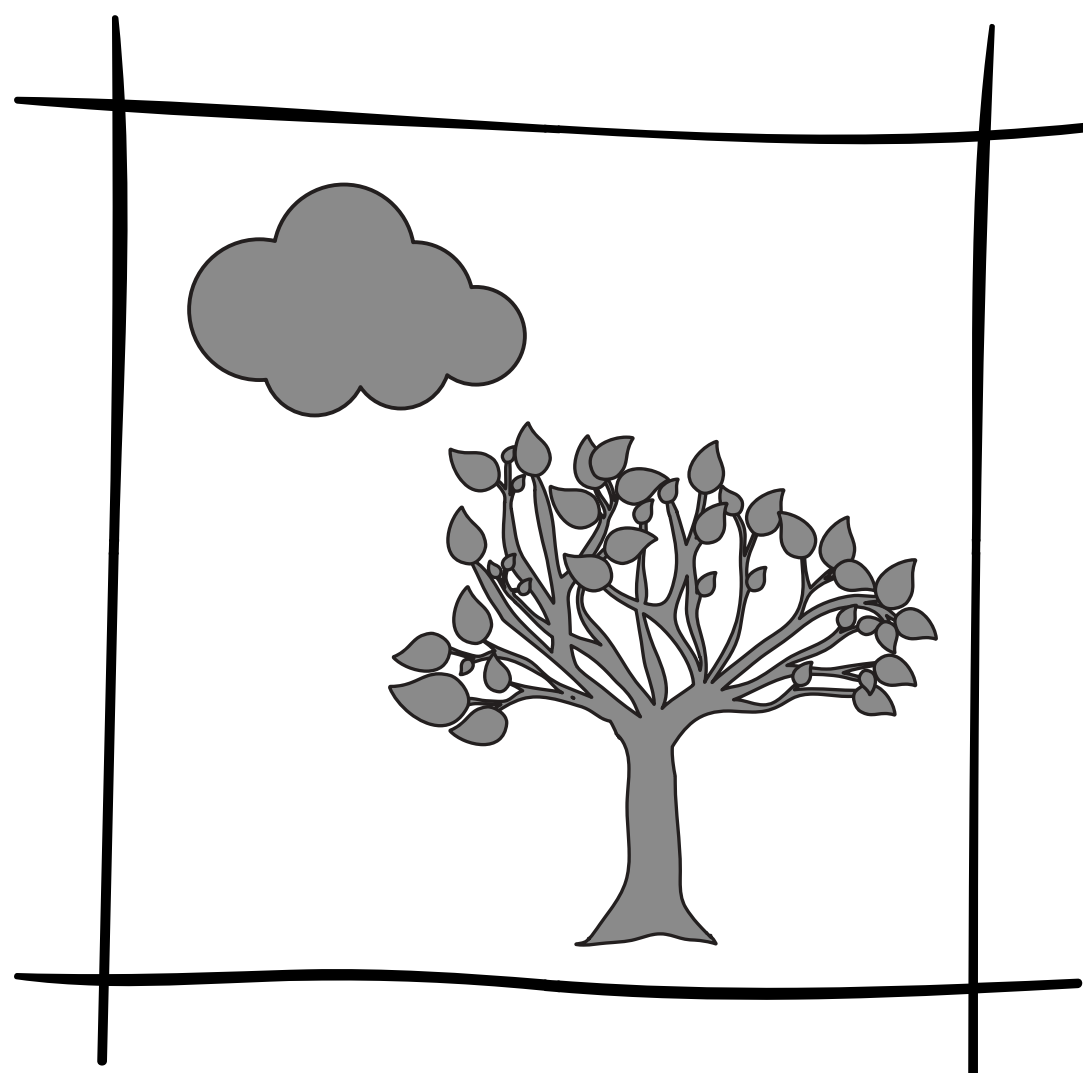
f/5.6



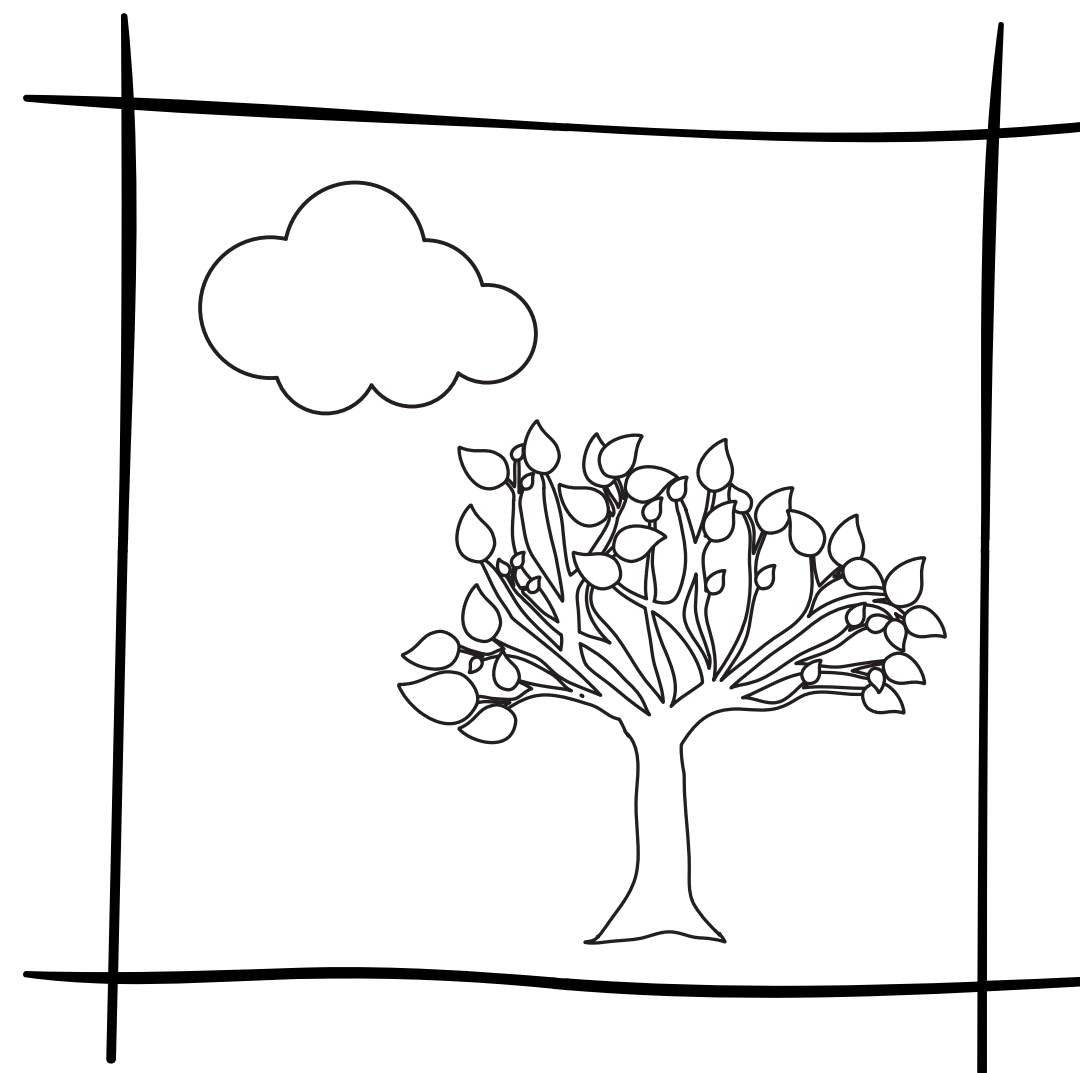
f/3.5



# DIMINUIR A VELOCIDADE

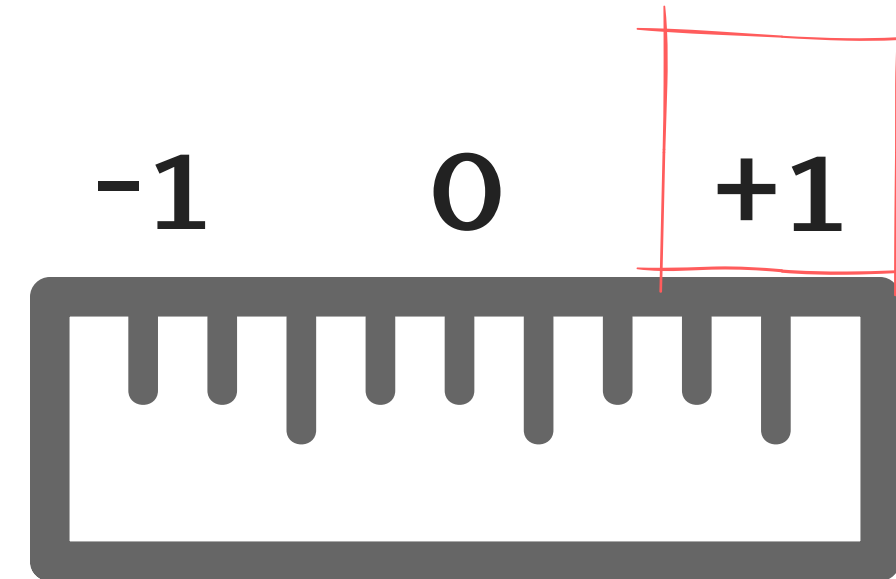
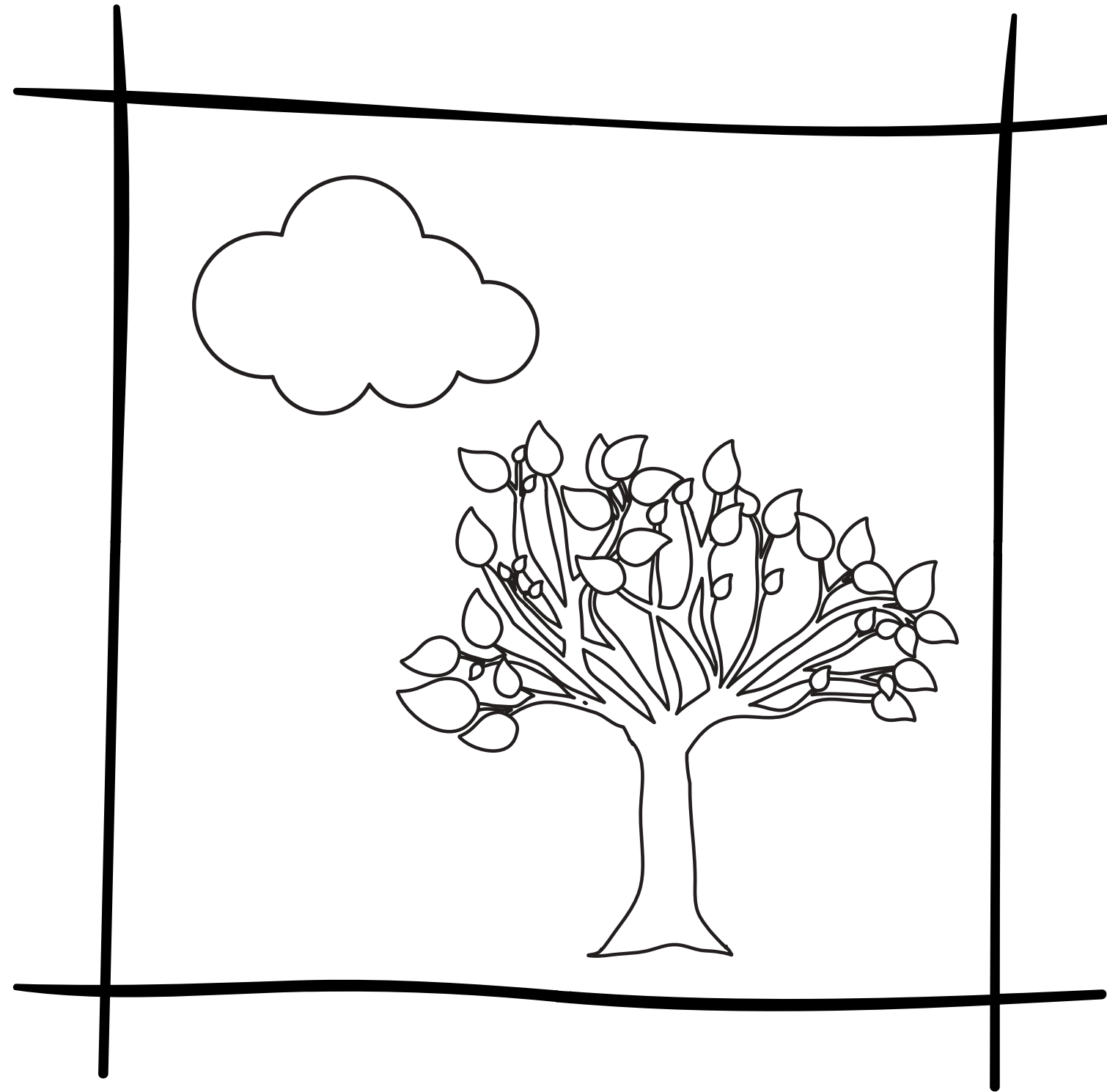


1/250



1/160





BRANCO É BRANCO

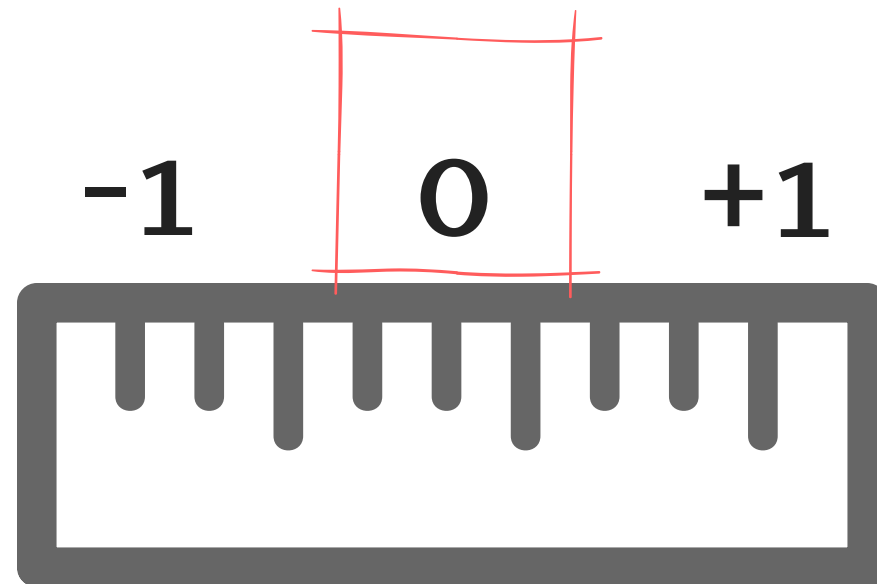
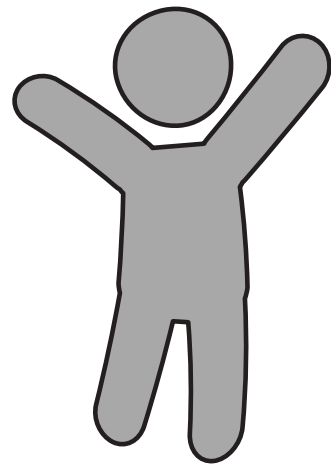
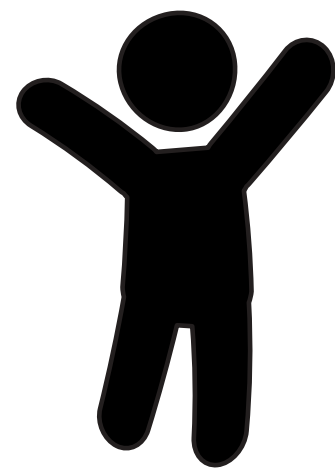
# EXEMPLO FOTÔMETRO ZERADO

objeto PRETO

ISO 200

f/5.6

1/250

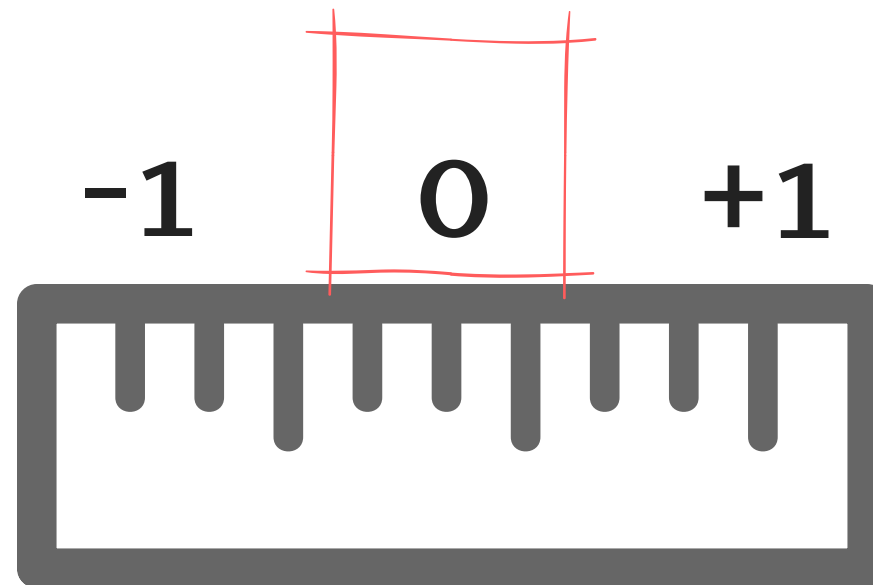


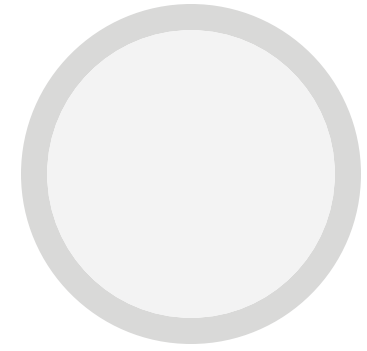
o que fazer  
para o PRETO  
sair PRETO e  
não CINZA?

preciso de  
- LUZ

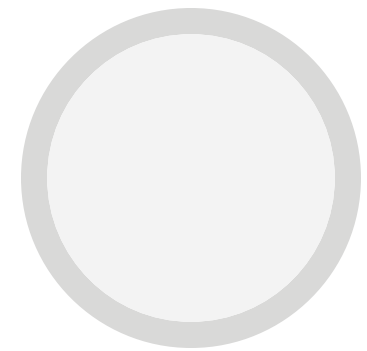
porque

fotômetro zerado = tons médios = cinza

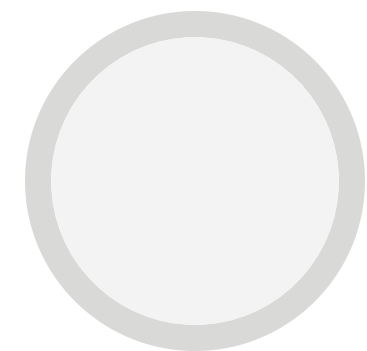




DIMINUIR O ISO



FECHAR O DIAFRAGMA



AUMENTAR A VELOCIDADE







DIMINUIR O ISO OU



FECHAR O DIAFRAGMA OU

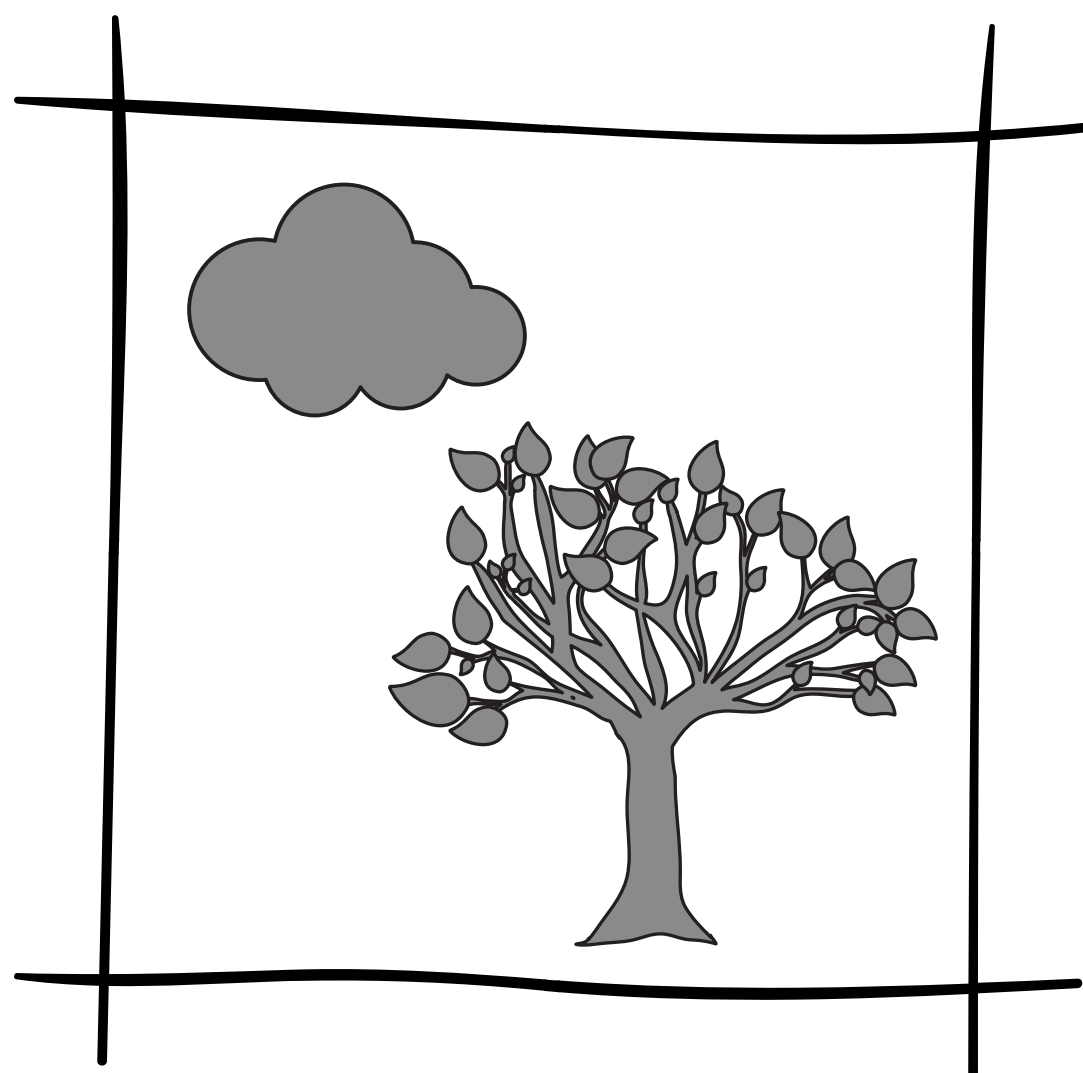


AUMENTAR A VELOCIDADE

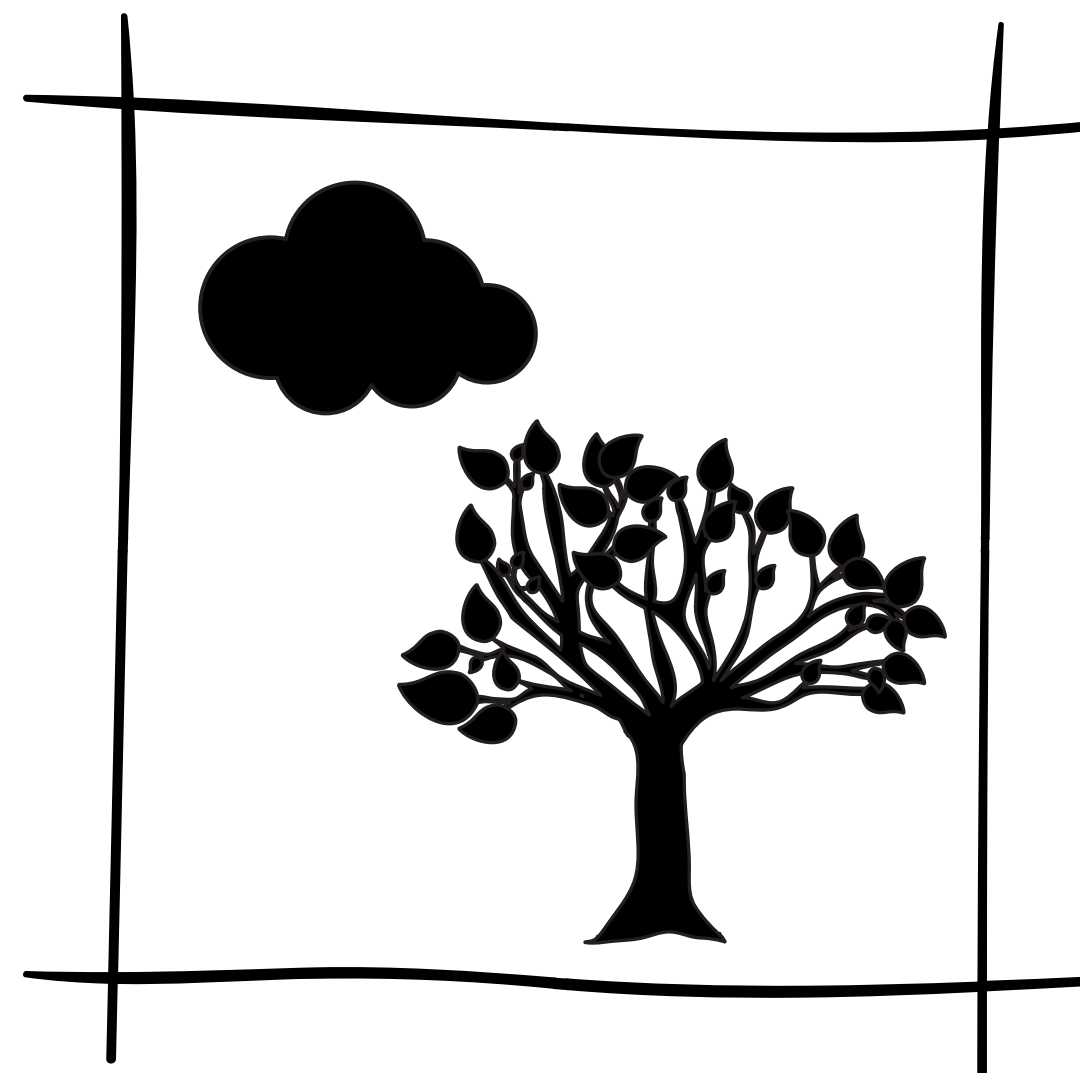




# DIMINUIR O ISO



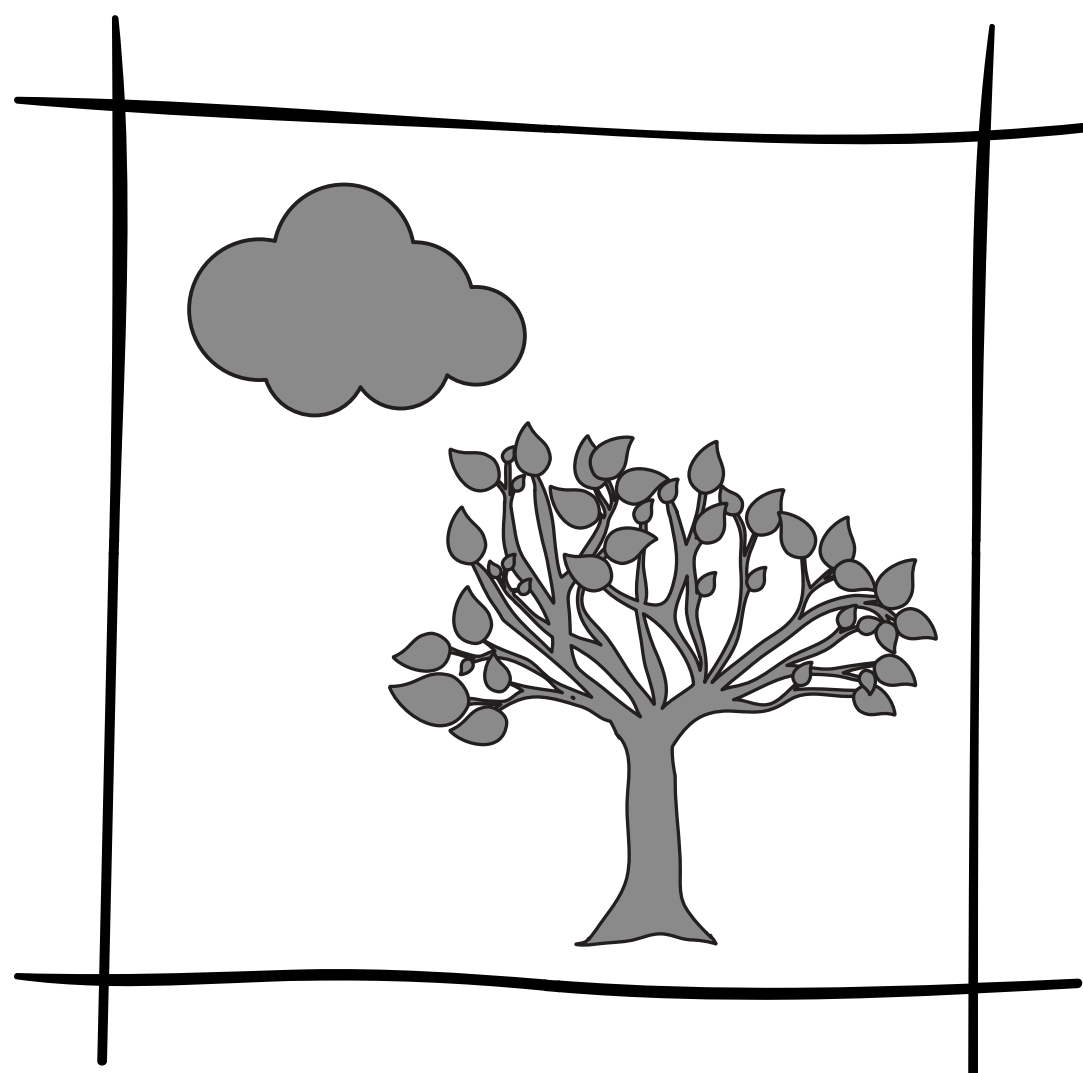
ISO 200



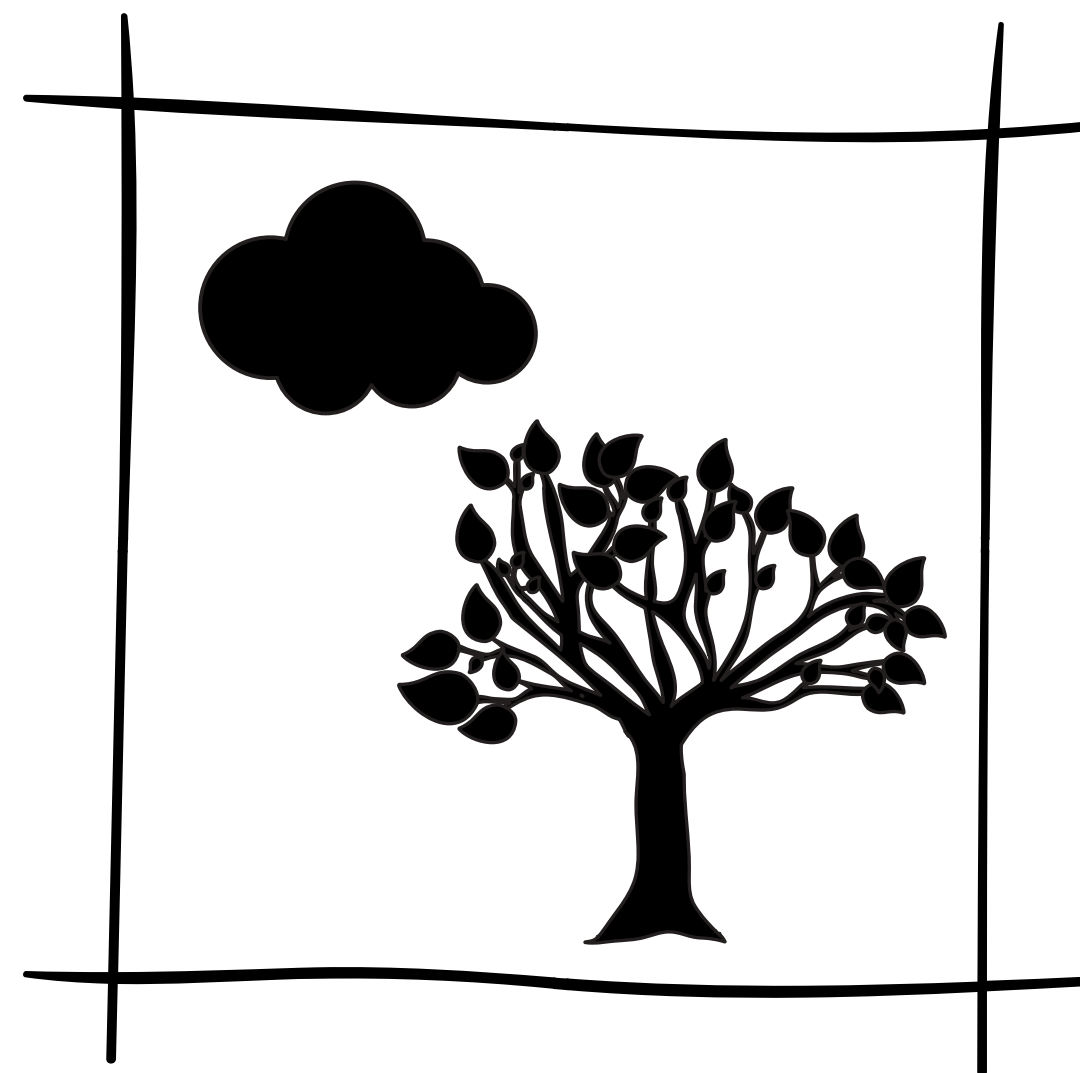
ISO 100



# FECHAR O DIAFRAGMA



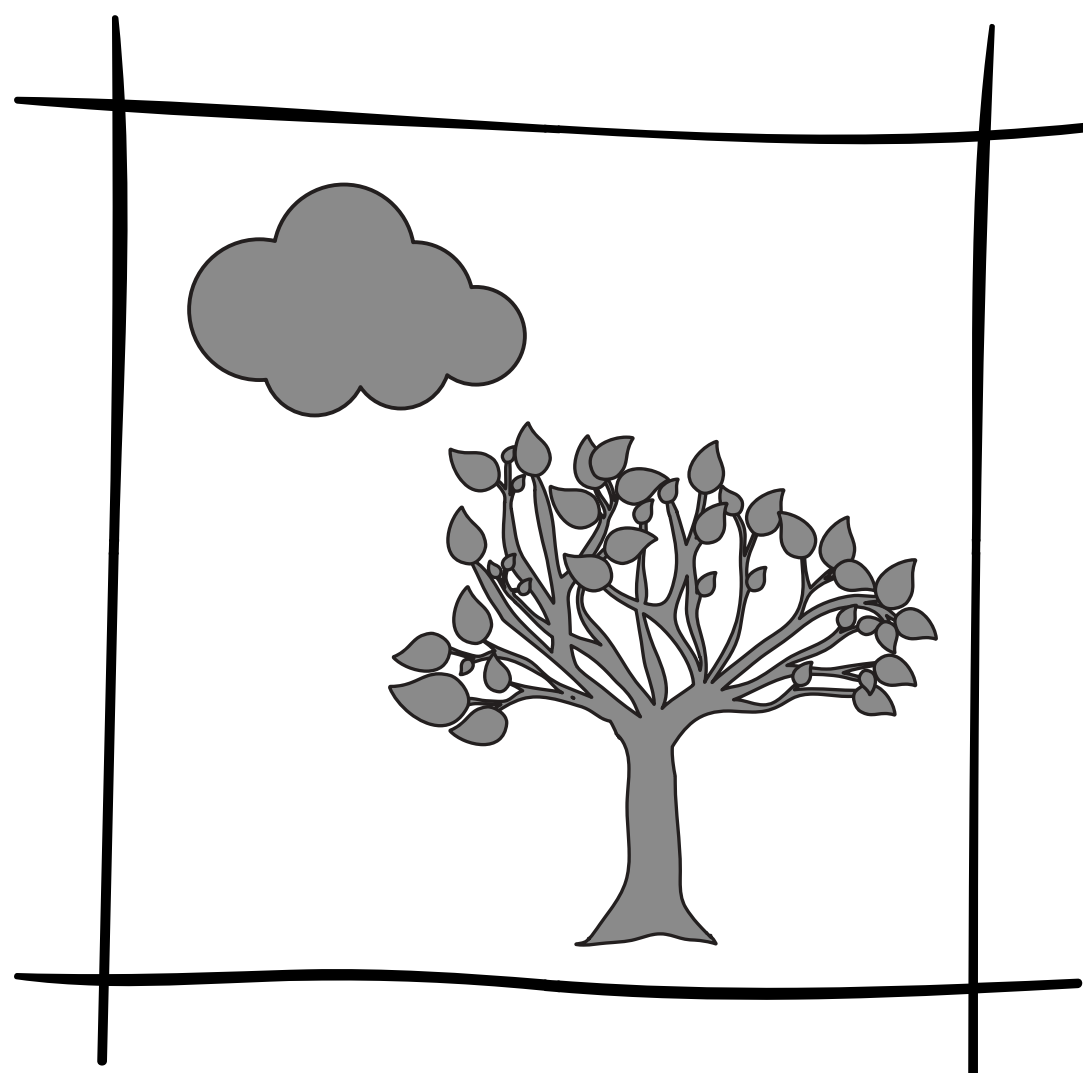
f/5.6



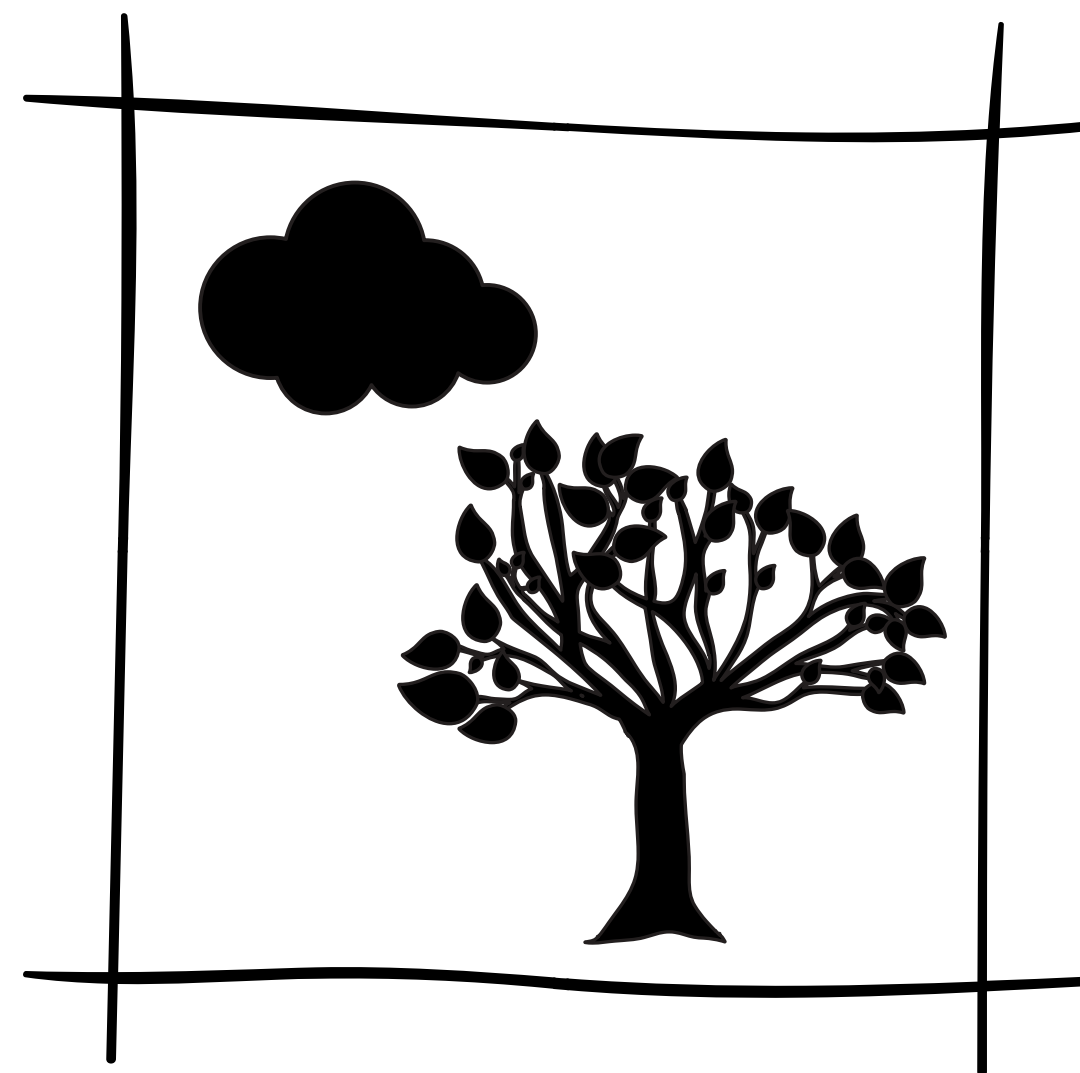
f/6.3



# AUMENTAR A VELOCIDADE

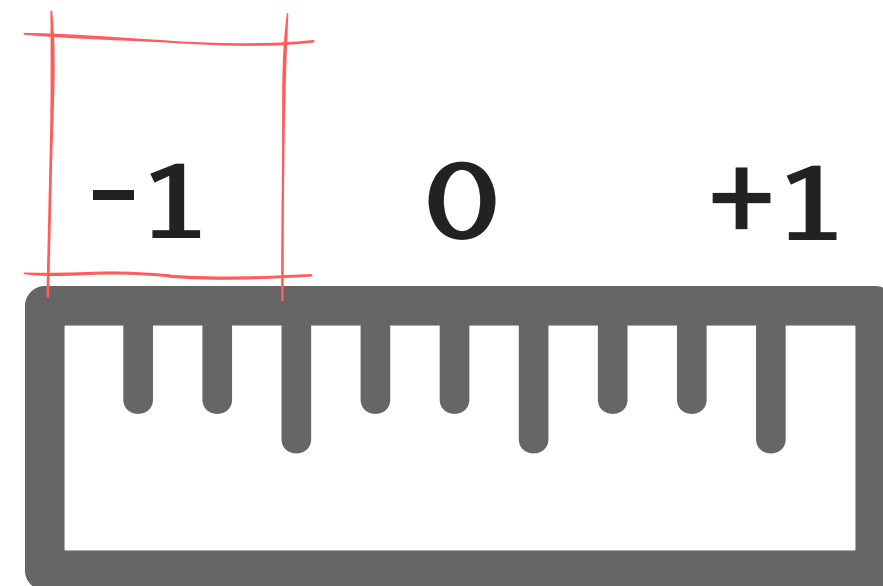
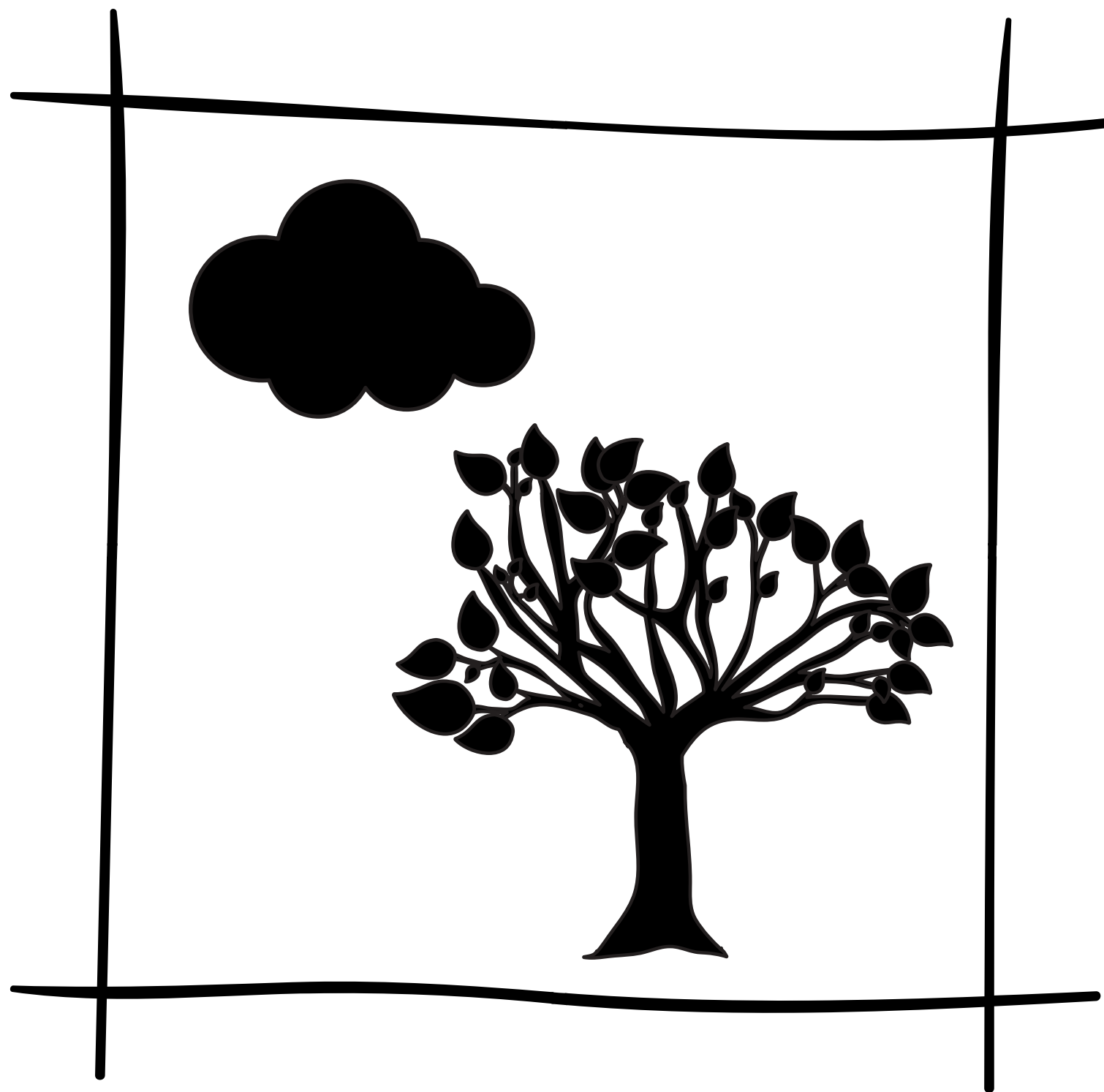


1/250



1/500





PRETO É PRETO



ATENÇÃO

exemplos meramente ilustrativos

[www.fernandapimentelfotos.com](http://www.fernandapimentelfotos.com)